

# Edinburgh CCAP Infrastructure Owner Consultation

April '24 to July '25

£30,000

City of Edinburgh Council



## Overview:

The historical evolution of the Edinburgh coast has been directly connected to the development of major infrastructure including ports, bridges and reclamation. The development of Edinburgh's CCAP must consider third-party plans for existing commercial and industrial functions.

The case study will present the outcomes of engagement about present and future coastal process with owners of five major infrastructure assets: Forth Ports Leith, Seafield Wastewater Treatment Works, Forth Bridge, Queensferry Crossing, and Forth Road Bridge.

## What we are hoping to learn:

We hope to develop a strong understanding of the benefits, implications, and challenges of coastal adaptation for asset owners. This will allow for better informed CCAP policies and triggers and increase awareness of the reality of future coastal adaptation.

This should improve Edinburgh's CCAP by integrating government, community & infrastructure owners' aspirations. Our findings will be relevant to other urban shores.

*"By engaging early with our partners, we will better understand how these owners' plans will affect the City of Edinburgh's CCA Plan, and vice versa. Productive dialogue with stakeholders is a vital part of our CCA Plan. We look forward to exploring and sharing the findings with other local authorities facing similar challenges".*

Stephen Knox, The City of Edinburgh Council

#adapt

#community

#EO



The Scottish Government  
Riaghaltas na h-Alba



MOTT  
MACDONALD



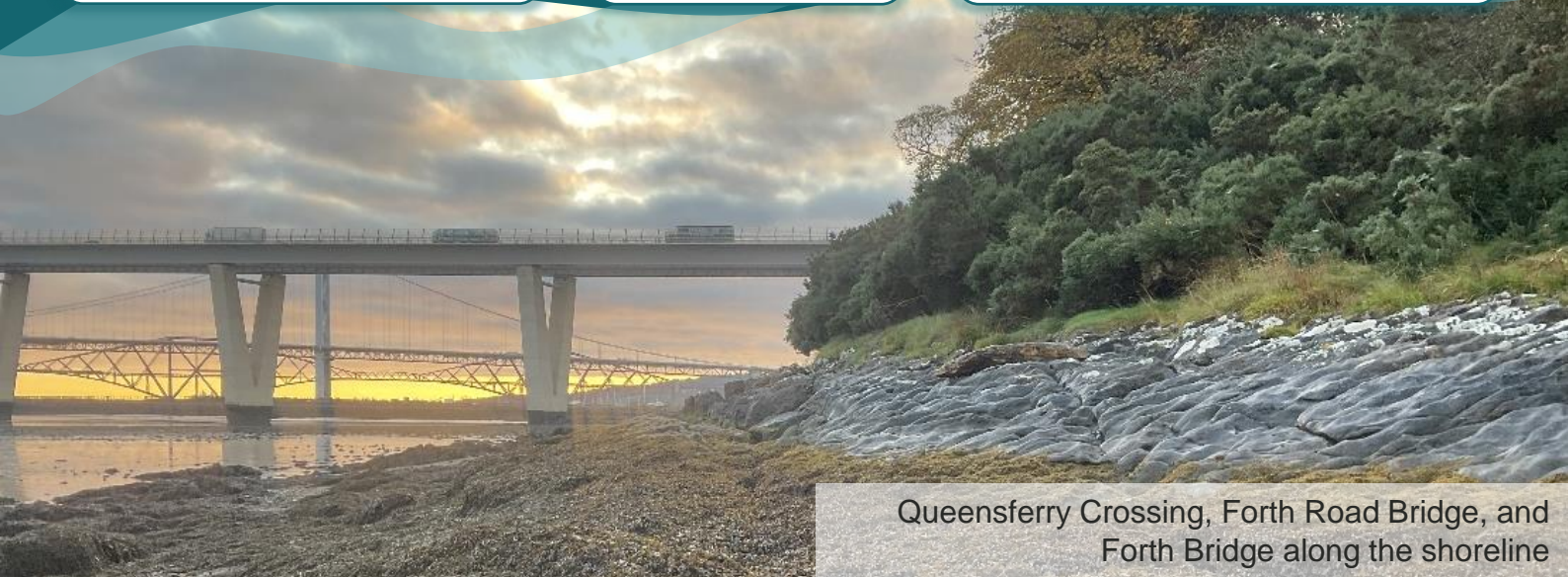
Dynamic Coast  
DynamicCoast.com ©DynamicCoasts

# Edinburgh CCAP Infrastructure Owner Consultation

April '24 to July '25

£30,000

City of Edinburgh Council



Queensferry Crossing, Forth Road Bridge, and Forth Bridge along the shoreline

## Overview:

The case study will inform the development of CCAP policies, highlight the role of these policies in adaptation along the Edinburgh coastline, and reveal the best methods for undertaking these engagements.

## What we have learnt so far:

Asset owners have a varied understanding of long-term coastal change and adaptive approaches, and this has required a tailored approach to consultation with these different owners.

Asset owners currently rely on the existing coastal management approach for their assets. Prior to consultation, some asset owners were not considering changes to this approach.

Asset owners are better-informed of the relevance and benefits of coastal adaptation in the long term, and the importance of a CCAP to guide such procedures.

We better understand the areas of concern, direct and indirect impacts, and anticipated knock-on effects of coastal adaptation.

This will allow CCAP policies and triggers to be better-informed and more effective.

*“Infrastructure owners along our frontage are now aware of long-term coastal change adaptation and the role of CCAPs. We look forward to continued collaboration to develop better-informed coastal management approaches.”*

Gordon McOmish, The City of Edinburgh Council

#adapt

#community

#EO

