

Cullipool: Shore protection and Beach Feed

April '24 to March '25

£80,000

Argyll and Bute Council

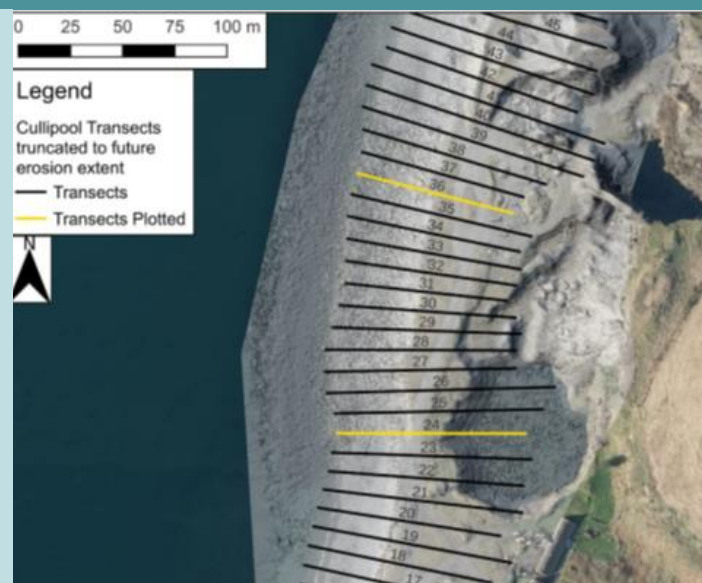


Cullipool conservation village is experiencing violent storms more regularly

Overview: This project is Phase 2 of a 4-part programme which will adapt the shoreline and deliver ongoing protection to the conservation village. The design by the University of Glasgow is to mitigate damage from storm events and flooding, using locally available resources (slate spoil). Phase 2 continues the work delivered in 2023 to strengthen the north end of the shore protection by completing the more complex south end build and preparing for the main beach nourishment Phase 3.

What we are hoping to learn:

How communities can best use their own resources to gain agreement in the community to deliver long term actions to protect or adapt their coastlines. This is key in the slate islands and nearby mainland coastal areas with rocky shorelines. We also hope to continue to partner with University of Glasgow to monitor Cullipool shoreline. This data will also be available to the wider research community to investigate different methods and effectiveness.



#adapt

#community

#EO



#1. Sep 2023

Cullipool: Shore protection and Beach Feed

April '24 to March '25

£80,000

Argyll and Bute Council

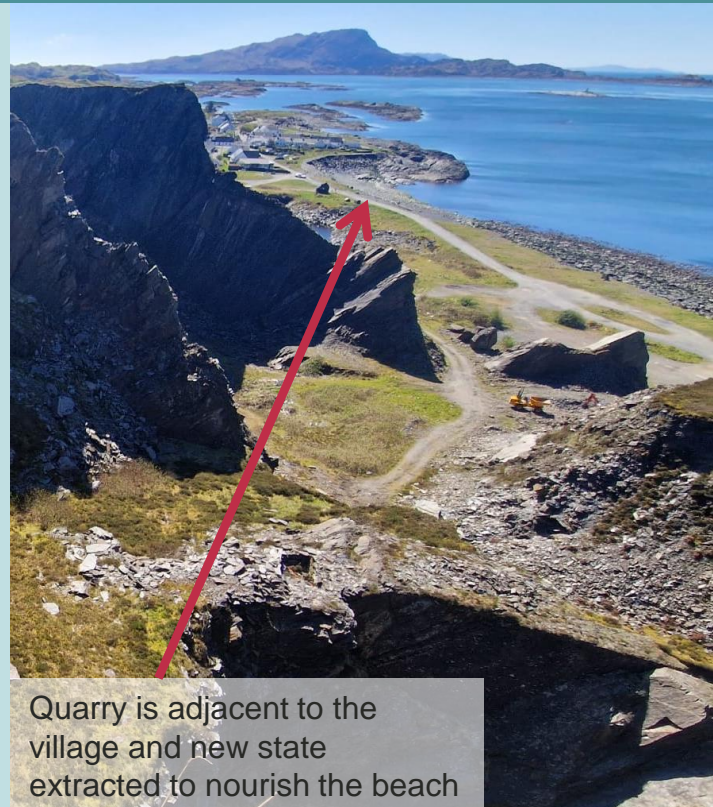


Cullipool beach rebuilt with much larger stone to alter shape and strengthen the sea defence

Overview: The plan was delivered successfully but took longer than scheduled. We had ferry issues and another storm event in the middle of the work and had to refocus onto repair and reduce some of the beach feed volume. Argyll and Bute Council topped up our funding with £15k which enabled us to complete the adaptation successfully.

What we took away:

- Follow the PLAN! – We are working to a long-term plan set out by the University of Glasgow, ensuring continuity over years. Think Long Term.
- Contractor availability – Book early and look for local contractor to reduce travel issues.
- Keep a record – The Coast Snap model from Moray Council was used on Luing to ensure we can monitor the shore.
- Contingency is vital- Our ferry was out of service for yearly refit, which extended to 16 weeks. We had to work with contractor to reschedule.
- Community Continuity – Adaptation can be a very long-term activity and there needs to be a record of the plan and progress. This can be adapted but people need to know why actions have been taken.



Quarry is adjacent to the village and new state extracted to nourish the beach

#adapt

#community

#EO



#2. May 2025

Cullipool: Shore protection and Beach

April '24 to March '25

£80,000

Argyll and Bute Council



Cullipool beach adapted to take shallower incline and with significant stone added to base.

Overview: We're delighted to share that our 4-phase plan is progressing well. In May 2025, we received funding from the Scottish Government to restart operations at Cullipool Quarry. This crucial support enables us to move forward with **Phase 3**: transporting rock spoil material to the shoreline and beginning the restoration of a coastline that has suffered decades of erosion. Our next step is to carefully plan how to deploy and shape this material to achieve the greatest environmental and community benefit

What we need to do next

- Re-engage with the University of Glasgow team and update the model.
- Identify processes to operate Phase 4 - Nourish the Beach, that are environmentally sustainable.
- Continue to explore other methods to adapt the coast, including seaweed.
- Continue our work as part of the Carbon Neutral Islands Project to reduce our environmental impact as a community.



Cullipool quarry could supply a yearly top up 'beach feed' for decades.

#adapt

#community

#EO



#3. May 2025